

FEBRILIS

Medicinal  
Maze  
Inveiling  
Glass

*Janet Laurence*

## Medicinal Maze Inveiling Glass

This glass garden for the Novartis Campus is based on notions of historical medicinal and physic gardens, using varying transparencies, translucency and opacity, the material and the immaterial, to encapsulate images of the medicinal plant and scientific world.

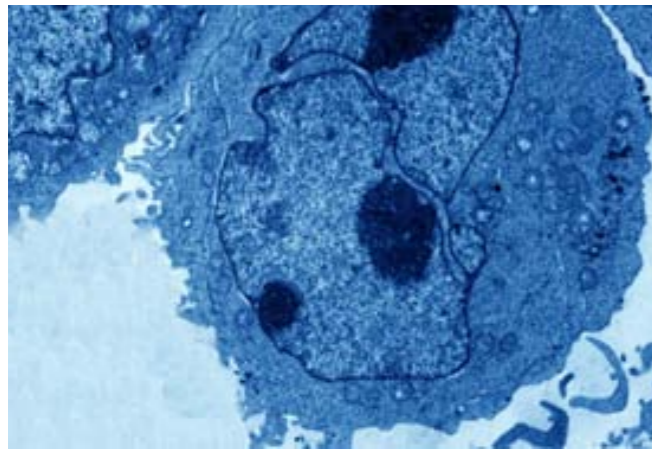
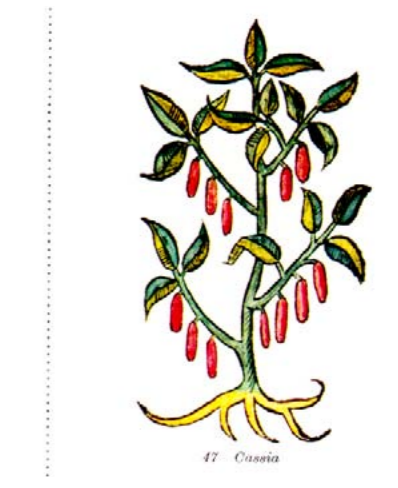
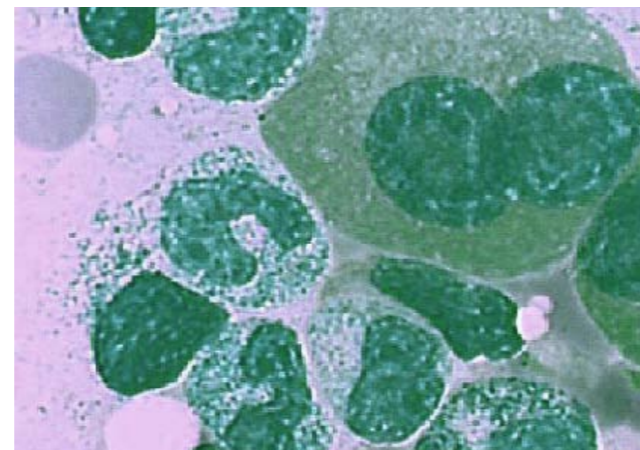
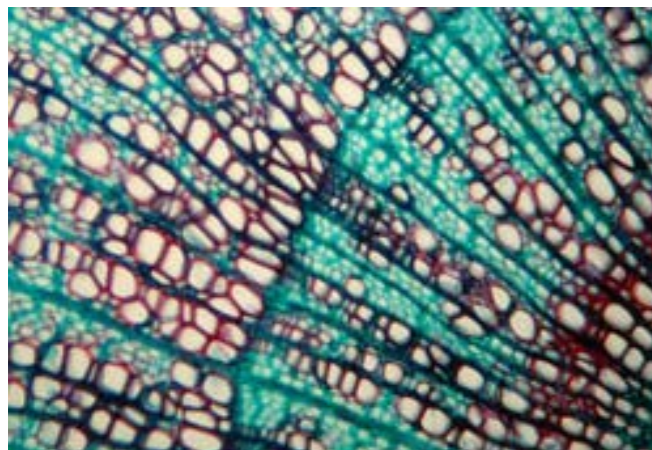
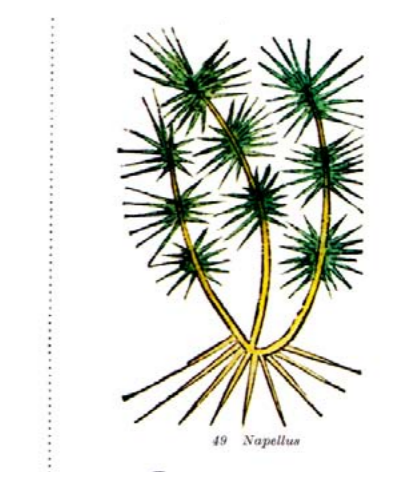
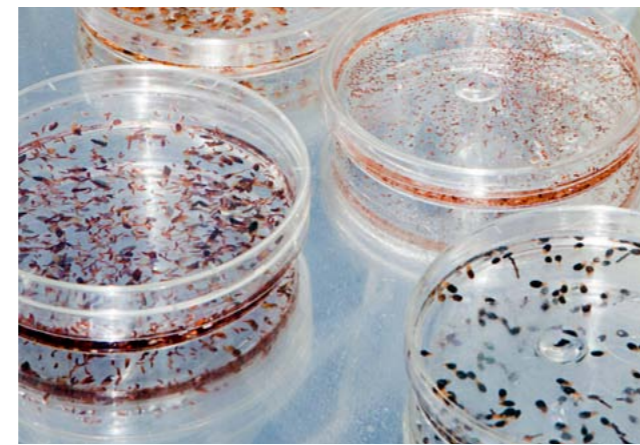
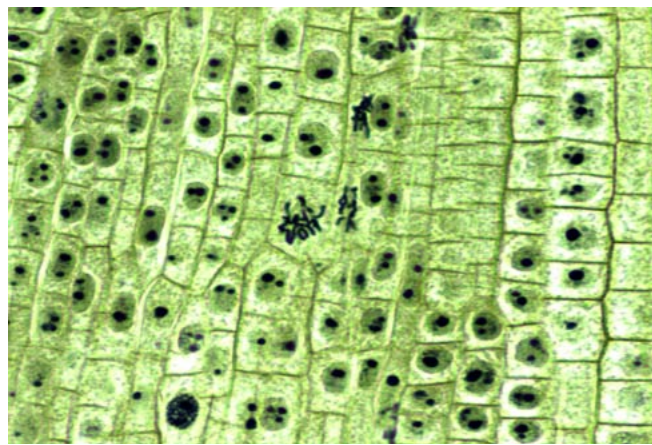
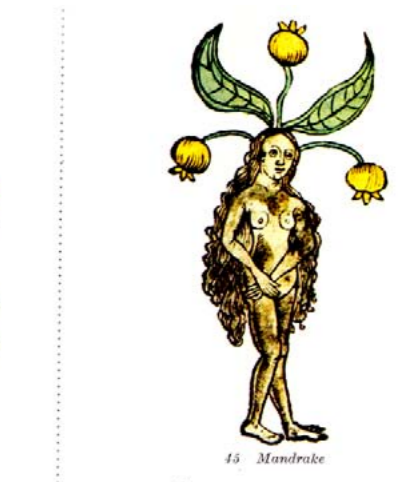
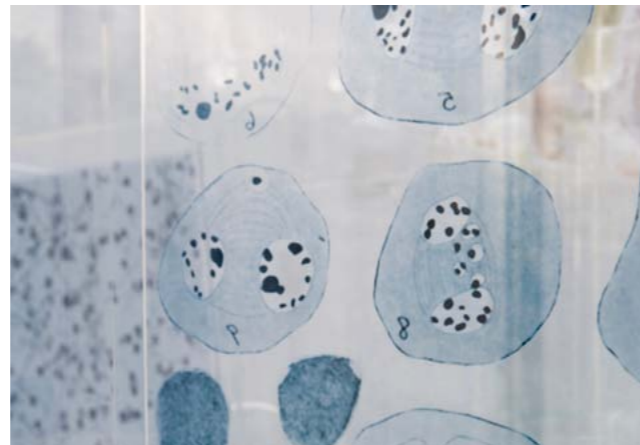
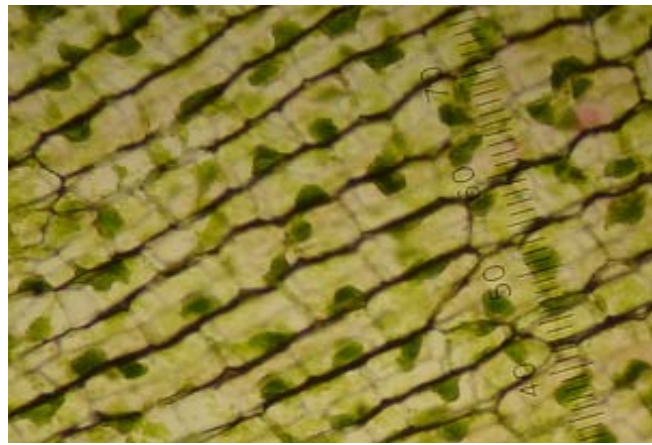
Laid out in a formal grid-like pattern, the garden forms a maze like structure articulated by a series of glass panels.

Veils as 'spilt' green glazes have been poured onto the glass with the gesture of sowing seeds, their presence suggesting the essential oils and liquids we extract from plants.

In varying degrees of transparency these fluid panels are overlaid and interspersed with white drawings from early botanical illustrations of medicinal herbs and plants, as well as their micro cellular scientific forms.

The panels, like large scale vertical microscope slides enable us to inspect at close range both liquids and solids, diagrams and history as the human wonder of medicinal science is encapsulated within the layers of glass.

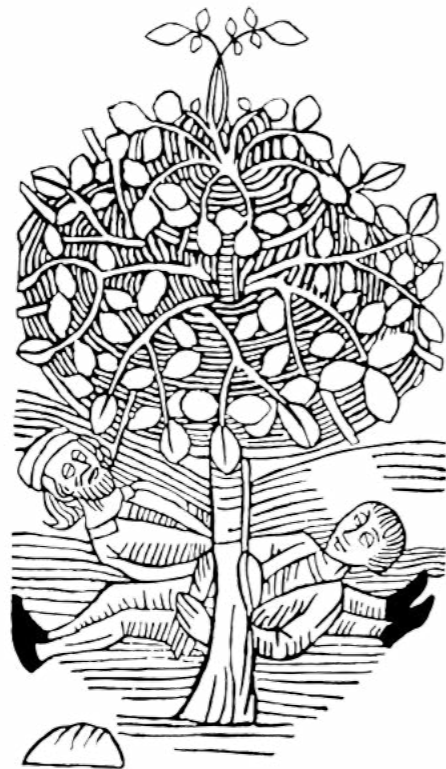
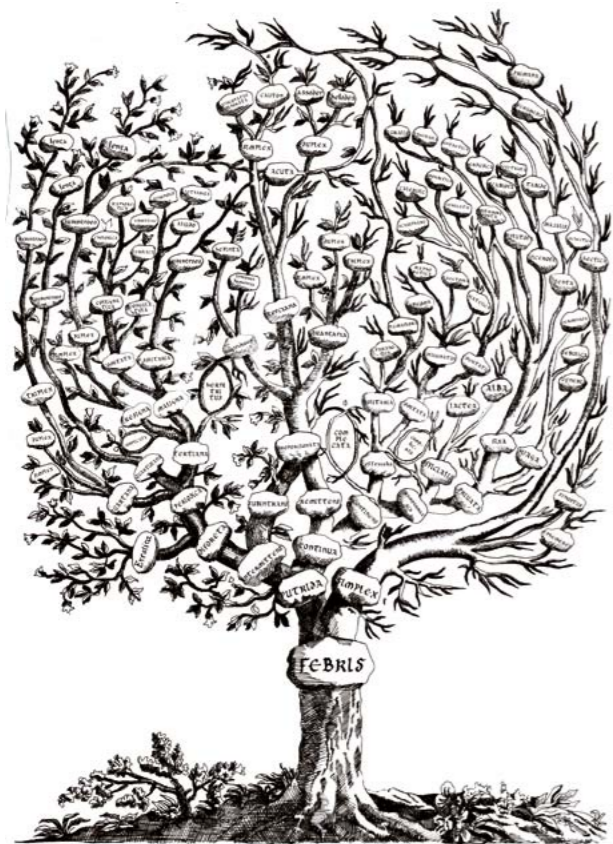
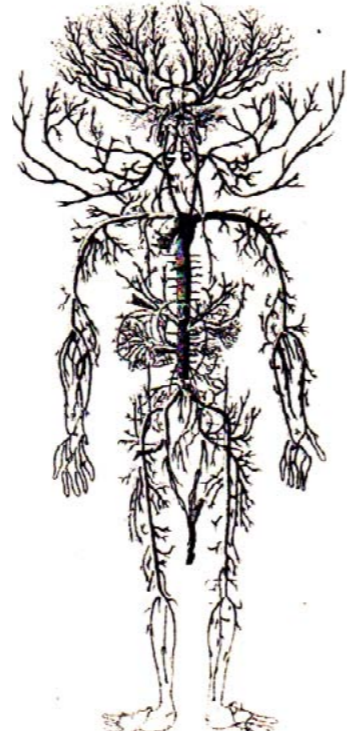
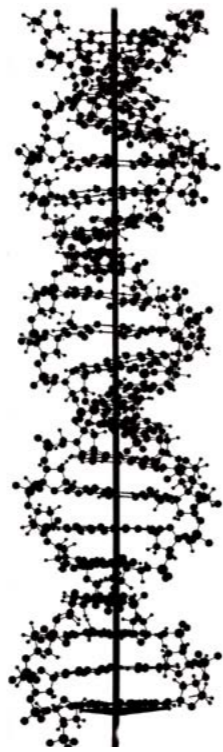
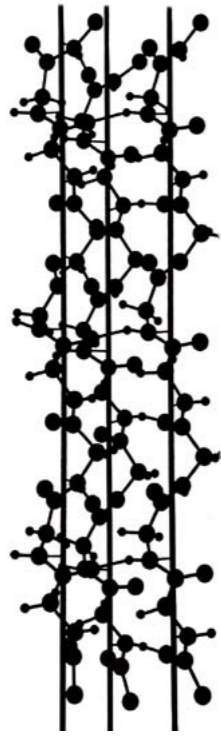
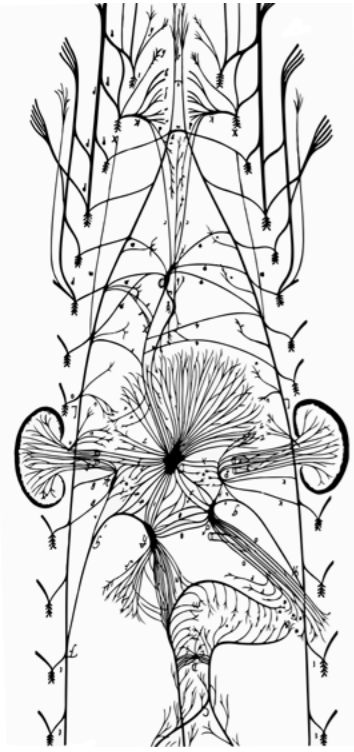
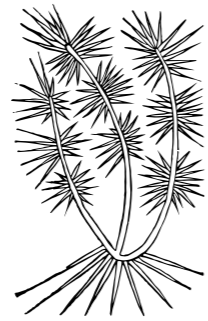
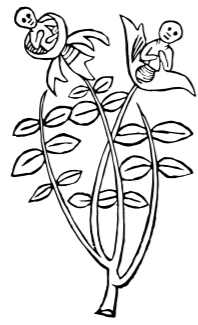
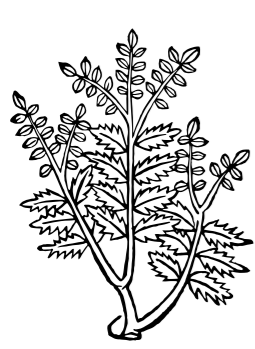
Offering a different aspect on every side, the maze sits continually within the present reflecting the light world around it, whilst offering glimpses and paths through it, from one side to the other. The unfolding maze invites one inside, offering a new experience at its core. It creates a removed space in a contemporary setting for one to be immersed within, inveiling one into a garden of medicinal herbal planting within a contemporary architectural context of the Novartis Campus.



Plant cell maze-like structures inspire the works labarynthian form, whilst images of cancerous T-cells, Leukimia and malarial cells reference current Novartis research

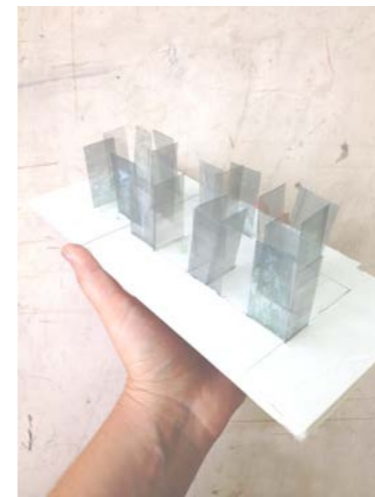
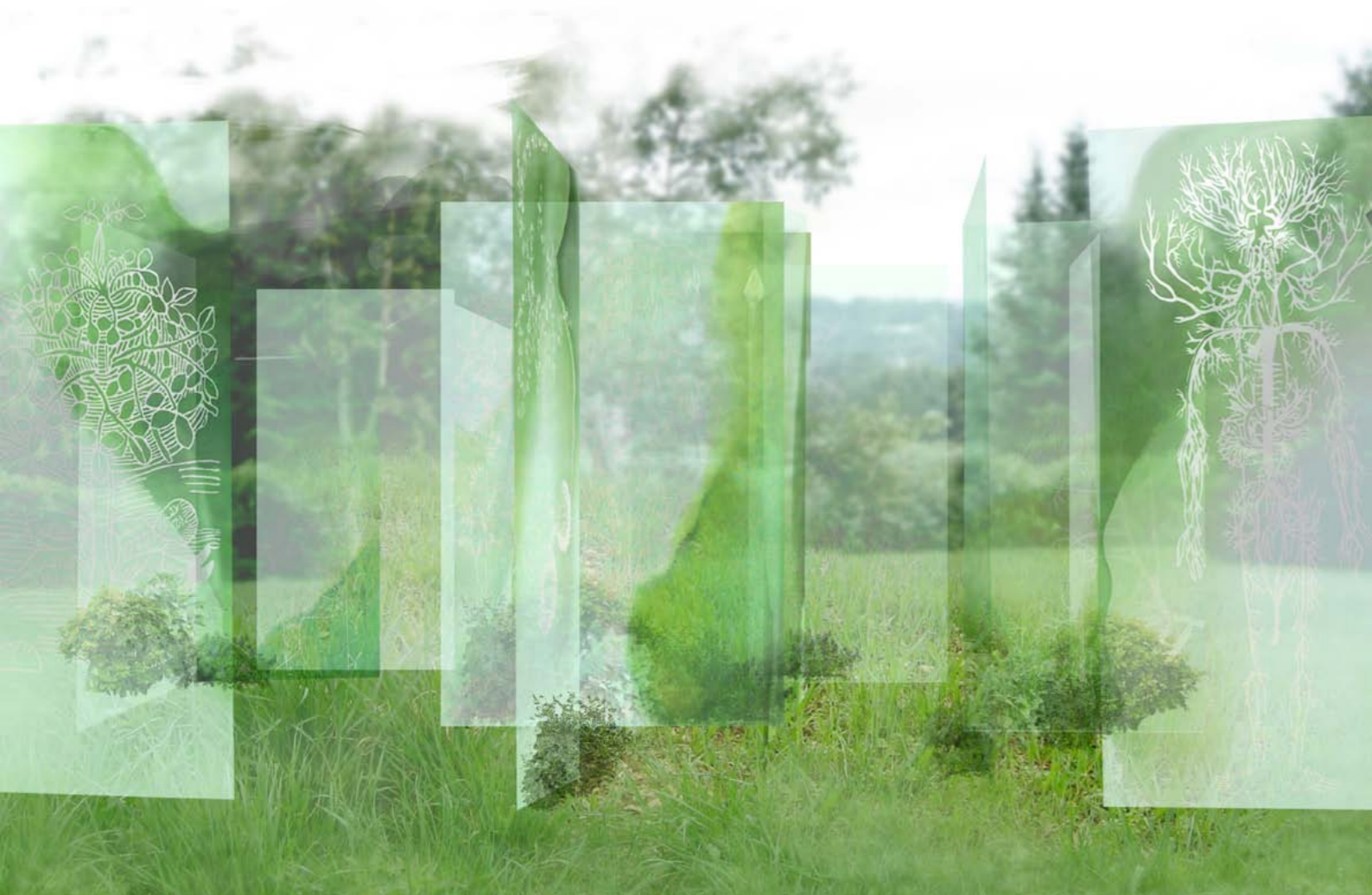


images are sourced from a variety of ancient medicinal texts including:  
*De Materia Medica* c.50-70 AD  
*De Hortus Sanitatis* c.1491  
 Jacob Meydenbach  
*Tacuinum Sanitatis* c.1390

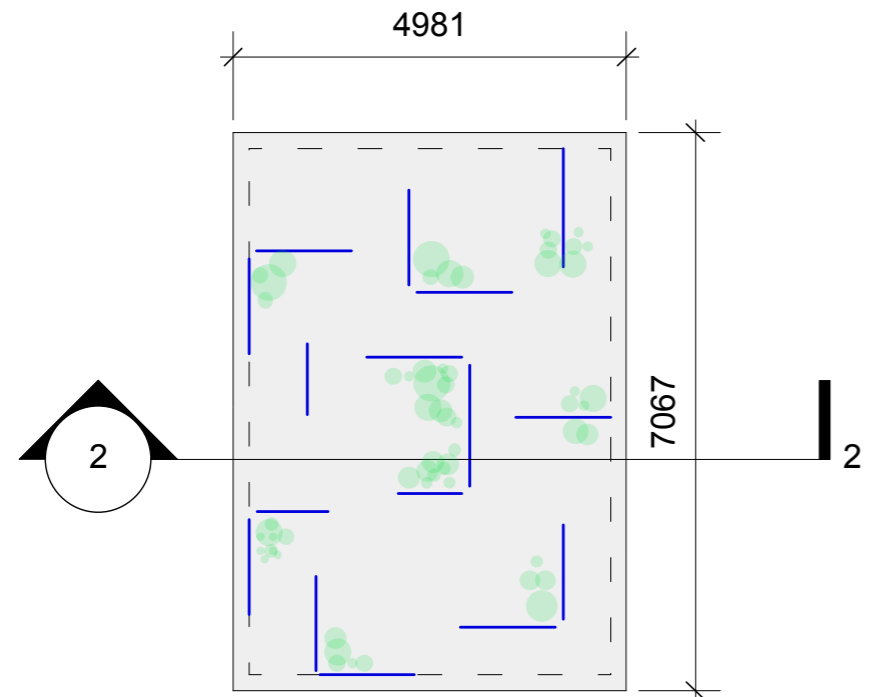


reworked source images featuring in glass panel graphics.

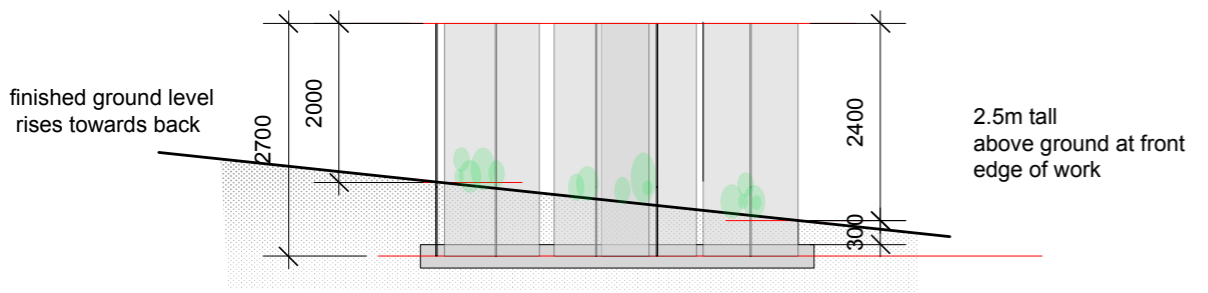




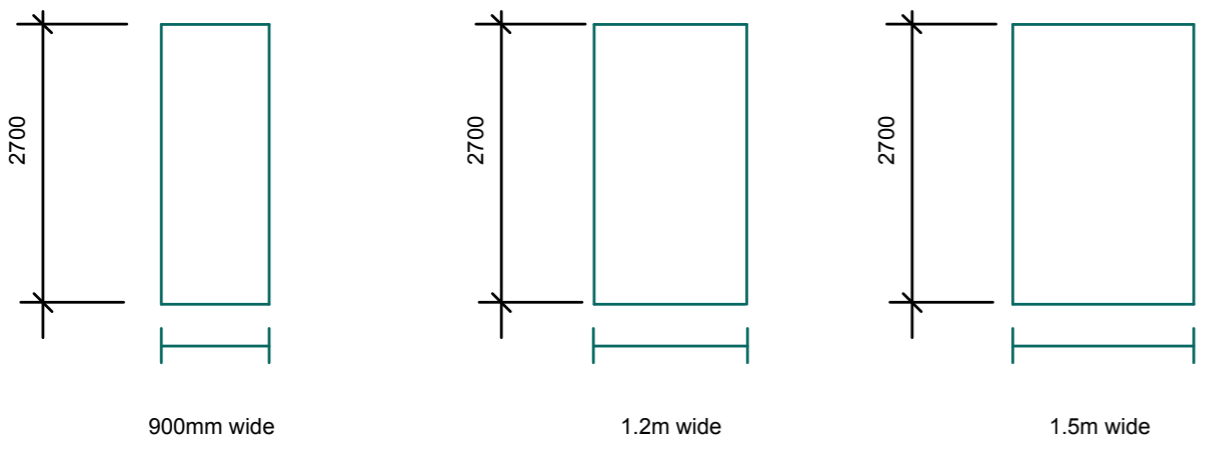
renders and models mocking up the panel and graphic arrangements



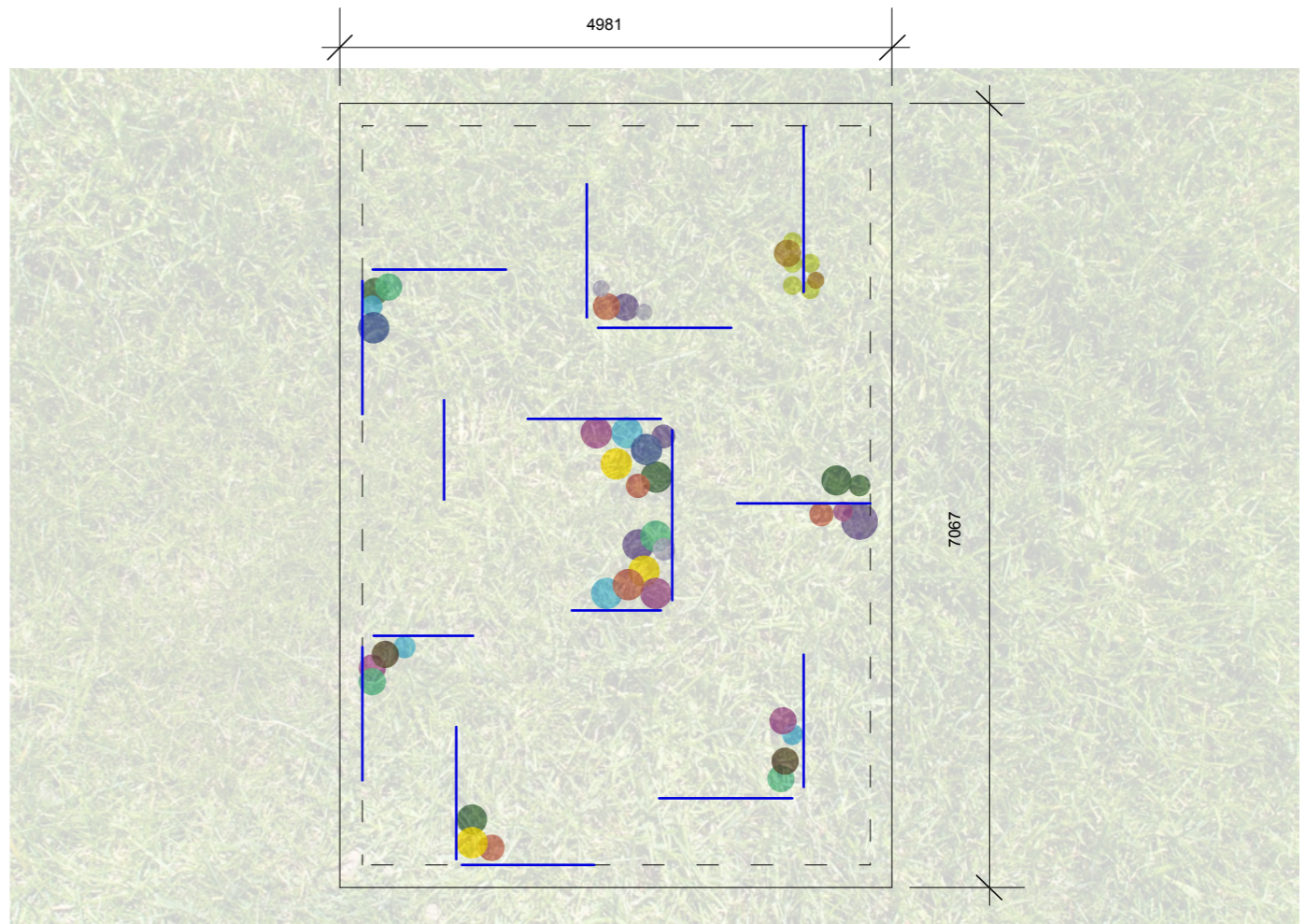
1 glass layout plan  
Scale: 1:100



2 short section  
Scale: 1:100

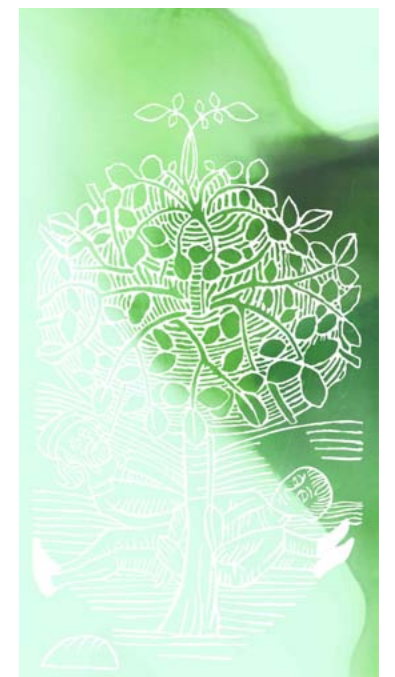


quantities:  
3 x 900mm panels  
11 x 1200mm panels  
2 x 1500mm panles

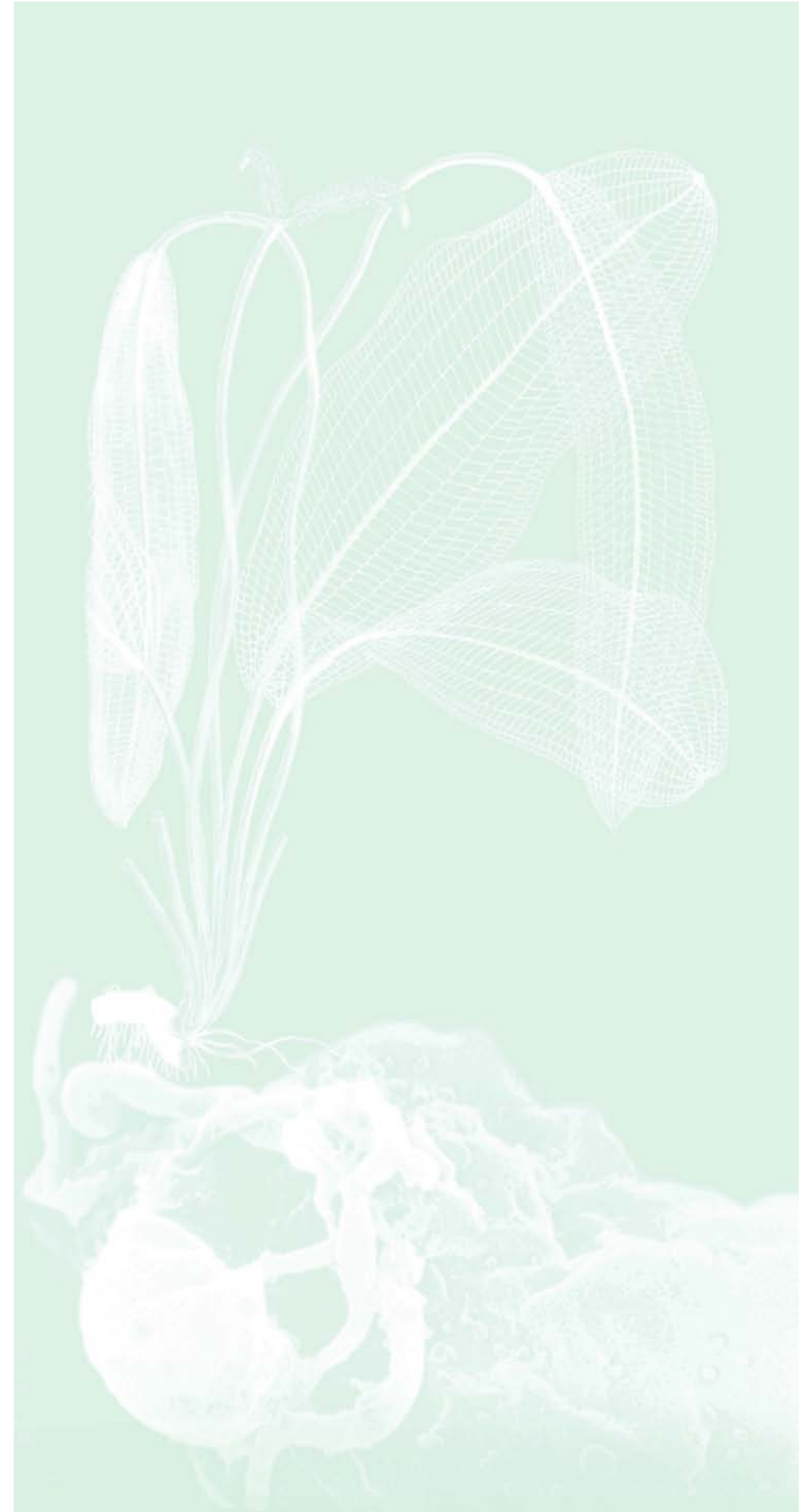
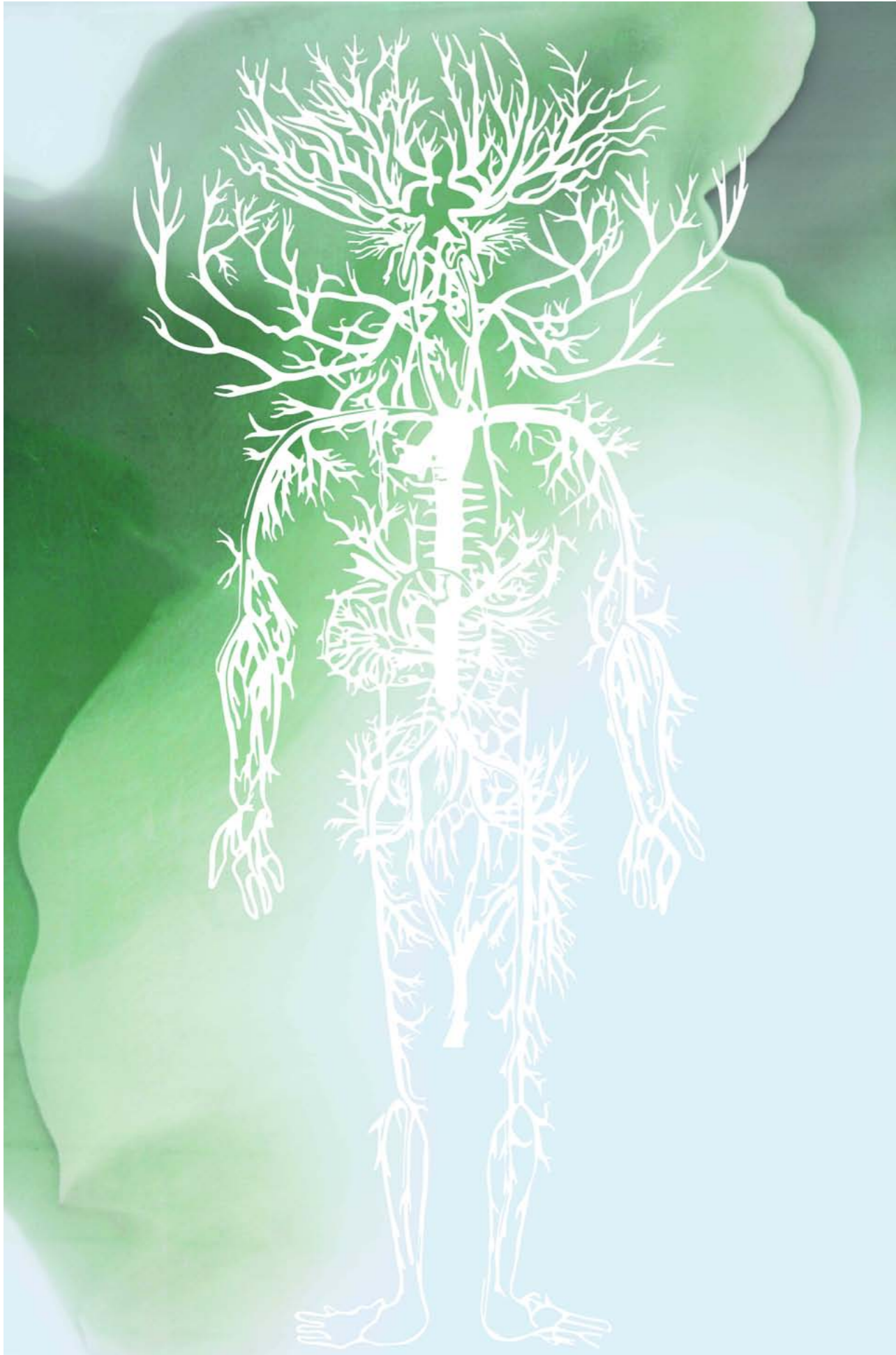


3 planting plan





Printed on PLB laminate sheeting the graphic consists of two white printed graphic layers often with a green veil layer printed between. Low iron glass gives a slight green tint







previous relevant works using similar techniques and environments

